

HmIP-CODB, HmIP-CODB-A

Video Doorbell



Installation instructions and
operating manual

homematic 

Table of contents

1 Package contents.....	3
2 Information about this manual.....	3
3 Hazard information.....	3
4 General system information.....	5
5 Function and device overview.....	5
6 Start-up.....	6
6.1 Installation.....	6
6.2 Pairing with a control unit.....	8
7 Operation.....	9
7.1 Adjusting device settings.....	9
7.2 Operation of the camera.....	10
8 Troubleshooting.....	11
8.1 Flashing codes.....	11
9 Restoring the factory settings.....	12
10 Maintenance and cleaning.....	13
11 Disposal.....	13
12 Technical specifications.....	15

Documentation © 03/2026 eQ-3 AG, Germany

All rights reserved. No part of this manual may be reproduced in any form or duplicated or processed using electronic, mechanical or chemical processes without the written consent of the publisher.

It is possible that this manual may contain typographical errors or printing errors. However, the information contained in this manual is reviewed on a regular basis and any necessary corrections will be implemented in the next edition. We accept no liability for technical or typographical errors or the consequences thereof. All trademarks and industrial property rights are acknowledged.

Changes in line with technical progress may be made without prior notice.

Version 1.3

1 Package contents

1x Video Doorbell
4x screws
4x dowels
1x screwdriver
1x USB-C/USB-A cable, length:0.5 m
1x pin tool
Operating manual

2 Information about this manual

Read this manual carefully before beginning operation with your Homematic IP device. Keep the manual for later consultation. If you hand the device over to other persons for use, please ask them to read this manual.

Symbols used



This indicates a hazard.



This section contains important additional information.

3 Hazard information



We accept no liability for damage caused by use for other than the intended purpose, incorrect handling or failure to observe the hazard warnings. In such cases, all warranty claims are void. We accept no liability for consequential damage.



Do not use the device if it has visible damage or a malfunction. If you have any doubts, have the device checked by a qualified expert.



For safety and licensing reasons (CE), unauthorised conversions to and/or modification of the device are not permitted.



The device is not a toy – do not allow children to play with it.



Plastic film, plastic bags, polystyrene parts, etc. can be dangerous for children. Keep the packaging material out of the reach of children and dispose of it immediately.



Ensure that the rechargeable batteries are replaced correctly. Only replace the rechargeable batteries with the same or an equivalent type. Do not dispose of the rechargeable batteries in a fire. Do not expose the rechargeable batteries to excessive temperatures. Do not short circuit the rechargeable batteries. Doing so will present a risk of explosion.



Leaking or damaged rechargeable batteries can cause chemical burns on contact with skin. Wear suitable protective gloves when handling or replacing leaking or damaged rechargeable batteries. Avoid contact with leaked liquids. In case of skin contact, rinse with plenty of water.



Do not open the device. You do not have to perform any maintenance on the device apart from any necessary rechargeable battery changes. Repairs may only be carried out by a qualified specialist.



Clean the device using a soft and dry lint-free cloth. The cloth can be slightly moistened with lukewarm water to remove more stubborn marks. Do not use solvent-based cleaning agents for cleaning, as these can damage plastic parts and labelling.

4 General system information

This device forms part of the Homematic IP Smart Home system and communicates via the Homematic IP radio protocol. All devices of the system can be configured comfortably and individually using the Homematic IP app. Operation requires connection to a Homematic IP Access Point or control unit. Further information on the system and on combination with other Homematic IP devices can be found in the Homematic IP [User guide](#).

All technical documents and updates are to be found at www.homematic-ip.com.

5 Function and device overview

The video doorbell features a doorbell function, reliable video surveillance and an intercom function in a single device. Thanks to battery operation or AC supply via bell wire (12–24 V AC), it is suitable for flexible outdoor installation and communicates with the Homematic IP app via the WiFi network. The app allows a live video and audio stream to be set up at any time so that you can communicate with visitors in real time even when you are out.

The device supports the following functions:

- **Doorbell function with video transmission:** Visitors can be recognised and seen and heard in real time via the app.
- **Intelligent detection of persons:** Detects human outlines in the field of vision and sends push notifications to the residents.
- **Intelligent motion detection:** Detects movement in the field of view and sends push notifications to users.
- **Live transmission:** Enables real-time access to video and audio at any time via the app.
- **Intercom function:** Visitors and residents can talk freely to one another via full-duplex audio.
- **Flexible power supply:** Operation either via rechargeable battery or via a fixed power supply (12–24 V AC). Active and inactive zones can be defined.
- **Recording function:** Can record around the clock and saves data either permanently on an SD card or as short event clips in the cloud.
- **Day and night operation:** Utilises night vision technology to provide clear and detailed images even in the dark.
- **Detection of persons (AI-powered):** Enable or disable notifications triggered by people.

Device overview

- A) Image sensor
- B) Lens
- C) LED and USB-C interface
- D) PIR sensor (motion detection)
- E) Microphone
- F) Status LED
- G) Doorbell push-button
- H) Micro SD card slot
- I) Power supply (ON/OFF)
- J) Reset button
- K) *Optional: Power supply via bell wire (12 – 24 V AC)*
- L) Loudspeaker
- M) USB-C charging cable

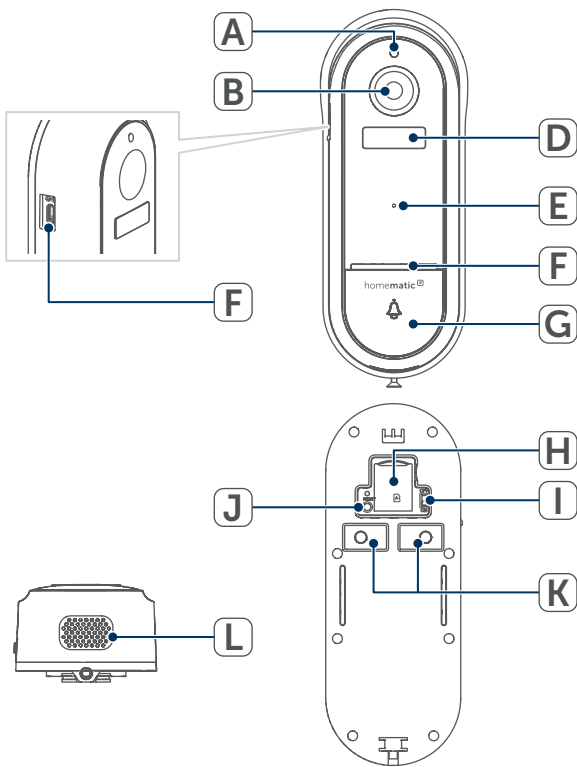


Figure 1

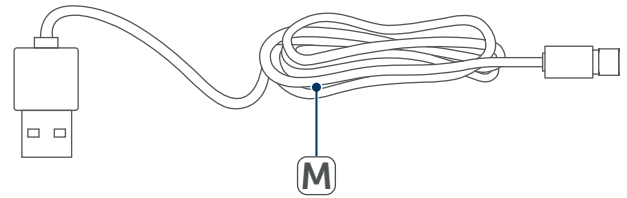


Figure 2

i Cloud operation by third-party manufacturers: the audio/video files are forwarded to the Homematic IP system over cloud servers in Germany. The maximum video length is 6 seconds per clip. All clips are overwritten after 7 days at the latest. Please observe the legal requirements concerning the use of surveillance cameras. Further information can be found in the Homematic IP app EULA and privacy policy.

6 Start-up

6.1 Installation

The video doorbell comes with a wall mount, the necessary installation materials and a USB-C charging cable. The device can be flexibly installed outdoors – either for battery operation or powered with 12–24 V AC via an existing bell wire. The installation position can be freely selected as long as a stable WiFi connection (2.4 GHz) is ensured and all safety-relevant instructions – e.g. checking for concealed cables – are observed. Thanks to its compact design and the simple latching mechanism, the Video Door Bell can be quickly inserted into the mount and securely fixed in place.

- i** Position the camera as far as possible within the recommended WiFi range of your router. Long distances or multiple structural obstacles can impair the signal quality. Avoid sources of interference.

Preparation

- Choose a suitable installation location.
- !** When selecting an installation location and drilling in the vicinity of switches or plug sockets, check for electric cables or other utility lines.
- !** Use only the original power supply unit supplied to power the device.
- !** Operation with 12–24 V AC voltage: Connect the cables only to a transformer with an output voltage of 12–24 V AC. DC transformers are not supported.
- !** Charge the battery with a 5 V DC charger. Recommended ambient temperature: 15–30°C.
- Set the operating mode for your device:
 - Battery operation
 - Power supply via bell wire (12–24 V AC)

Installing the wall mount

- Hold the wall mount in the desired position.
- Mark and drill the mounting holes.
- Attach the wall mount securely to the wall using the screws supplied.

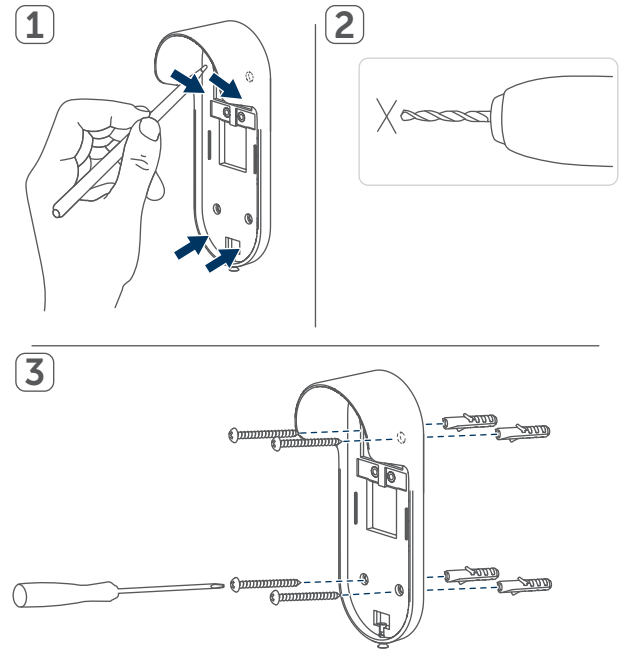


Figure 3

Battery operation

- Ensure that the battery of the video doorbell is charged.
- Use the USB-C charging cable included in the scope of supply to charge the battery.

(Option) Power supply via bell wire (12–24 V AC)



The device is part of the building installation. Observe the relevant national standards and directives during planning and set-up. The device may only be operated on a 230 V/50 Hz AC mains power supply. Work on the 230 V mains may only be carried out by a qualified electrician (in accordance with VDE 0100). The applicable accident prevention regulations must be observed while such work is being carried out. To avoid electric shocks from the device, please disconnect the mains voltage (trip the miniature circuit-breaker). Failure to observe the installation instructions can result in fire or lead to other hazards.

- Ensure that the power is switched off before working on the wiring.
- Prepare the cable ends and crimp on ring or Y-shaped cable lugs.
- Loosen the cross-head screws on the terminal block, insert the cables between the cable lugs and tighten the screws again.
- Switch on the power again only when all installation work has been completed.

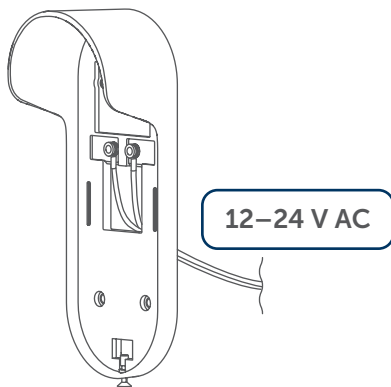


Figure 4

Inserting the video doorbell

- Insert the camera into the secured mount.
- Secure the device by tightening the bottom screw so that it is firmly in place.

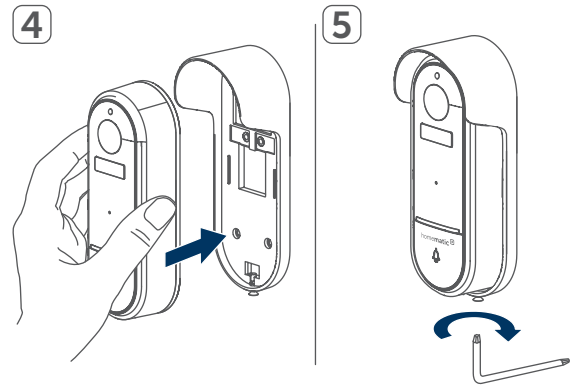


Figure 5

- Tilt or pan the camera until the viewing area is covered.
- After pairing with the Homematic IP app, check that the live image is displayed correctly. Make further adjustments, if necessary.

6.2 Pairing with a control unit




Read this entire section before starting the pairing procedure.



Set up your Homematic IP control unit via the Homematic IP app so that you can use Homematic IP devices in the system. Detailed information on this is to be found in the operating manual for the control unit.

- Open the Homematic IP app.
- Tap on **...More** in the homescreen.
- Tap on **Pair device**.
- Wait until the camera has been initialised.

- Tap **Scan QR code** and scan the enclosed QR code. (The device does not appear automatically in the Homematic IP app.)
- Connect the camera to your WiFi network. Select a 2.4 GHz WiFi network and enter the corresponding password.
-  The camera only supports 2.4 GHz WiFi networks. Set the router parameters correctly before connecting the camera to the 2.4 GHz WiFi network.
- Point the camera at the QR code displayed in the app.
- An acoustic signal sounds as soon as the QR code has been successfully scanned.
- The device is now ready for use. The camera LED has a steady blue light.
- Then follow the instructions in the Homematic IP app to make further settings.

7 Operation

If you have paired the device with a Homematic IP control unit, additional configurations are available in the device settings. You can make the necessary adjustments directly in the Homematic IP App:

7.1 Adjusting device settings

- **Alarm management:** Configure how the camera should react to security-relevant events and which notifications are sent.
- **Alarm notifications:** Enable or disable alarm notifications sent to your smartphone or tablet when movements are detected.
- **Motion detection:** Enable motion detection and set the relevant parameters.
 - **Motion alarms:** Enable or disable automatic video recording when movements are detected.
 - **Detection sensitivity:** Define how sensitively the camera should react to movements.
 - **Detection of persons (AI-powered):** Enable or disable notifications triggered by people.
 - **Recording time:** Duration of the recording after an alarm
 - **Alarm interval:** Defines the minimum time between two alarms

Video settings:

- **Flip the camera image**
- **Day/night mode:** Automatically adjusts the camera to bright daylight or dark environments

Audio settings:

- Microphone on/off
- Audio recording
- Loudspeaker volume
- **Recording management:** Make the settings for the storage location of your recordings.
 - Storage location: SD card and/or cloud
 - Recording mode: in response to events or continuously (continuous only when using an SD card)
 - SD card information
- **General settings:** Make general settings here (e.g. LED, time format).

- **WiFi access data:** If the WiFi access data change, the camera must be reset and then paired again. Follow the instructions in the app or in section [*Restoring the factory settings*](#).

7.2 Operation of the camera

The camera is operated in the Homematic IP app either via the room to which the camera is assigned or via the alarm system.

You can access the alarm system from the app home screen by tapping the Alarm icon.

8 Troubleshooting

8.1 Flashing codes

Flashing code	Meaning	Solution
Slow red flashing	Waiting for network connection	You can continue once the network connection has been established.
Fast red flashing	Connecting to network	You can continue once the network connection has been established.
Steady blue light	Camera is working correctly	
Steady red light	Error detected Possible errors: <ul style="list-style-type: none"> • Camera starting • Camera has a malfunction 	Wait a moment until the camera has started. Please see the display on your app or contact your retailer.
Red/blue flashing alternately (USB-C interface LED)	Battery is charging	Wait until the battery has been fully charged.

9 Restoring the factory settings



The factory settings of the device can be restored. Resetting the device to the factory settings deletes the WiFi data. The WiFi settings then have to be made again via the app. The device can then be added again. If the device has not been paired with a Central Control Unit, all the settings are lost.

Proceed as follows to restore the factory settings of the device:

- Press and hold the reset button for 5 seconds.
- The network settings are reset.

The device has been reset to the factory settings. The camera can be paired again.

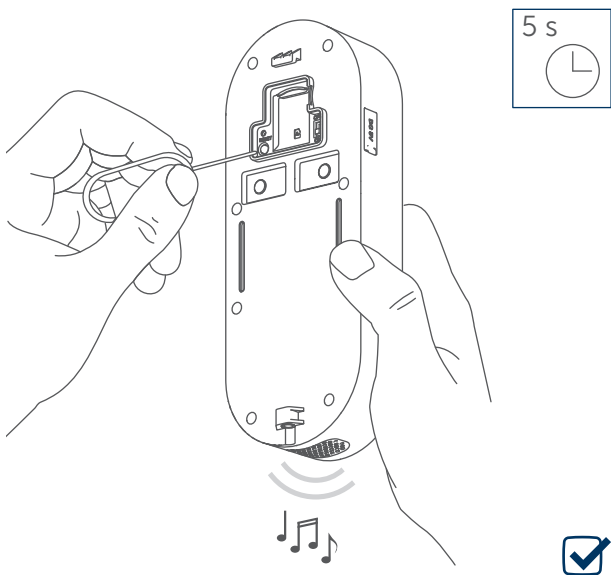



Figure 6

10 Maintenance and cleaning


 The device is maintenance-free for you. Leave any maintenance or repair to a specialist.


Clean the device using a soft, clean, dry and lint-free cloth. The cloth can be slightly dampened with lukewarm water to remove more stubborn marks. Do not use any detergents containing solvents for cleaning purposes. They could corrode the plastic housing and label.

11 Disposal



This symbol means that the device and the single-use or rechargeable batteries must not be disposed of as household waste or general waste, or in a yellow bin or yellow bag. For the protection of health and the environment, you must take the product, all electronic parts included in the package contents, and the batteries to a municipal collection point for waste electrical and electronic equipment to ensure correct disposal of the same. Distributors of electrical and electronic equipment or batteries must also take back waste equipment or used batteries free of charge. By disposing of them separately, you are making a valuable contribution to the reuse, recycling and other methods of recovery of used devices and used batteries. You must separate any used single-use and rechargeable batteries found in used electrical and electronic devices from the used device if they are not enclosed by the used device before handing it over to a collection point and dispose of them separately at the local collection points. Please also remember that you, the end user, are responsible for deleting personal data on any waste electrical and electronic equipment before disposing of it.

 The CE mark is a free trademark that is intended exclusively for the authorities and does not imply any assurance or guarantee of properties.

 If you have any technical questions about the appliance, please contact your specialist dealer.

12 Technical specifications

Device short designation	HmIP-CODB, HmIP-CODB-A
Supply voltage	5 V DC (SELV)
Supply voltage plug-in mains adapter (input)	Charging via USB-C or continuously / 100 V – 240 VAC / 50 Hz
Current consumption	1,000 mA max.
Continuous supply voltage	12 – 24 V AC
Current consumption in standby	800 µA
Power consumption during operation	350 mA (IR off)
Power consumption plug-in mains adapter	2.0 W
Nominal capacity of the battery	5200 mAh
Operating time in standby mode	Up to 6 months
PIR sensor detection range	100°, up to 5 m
2-way audio	Full duplex
Resolution	3 MP
Image sensor	1/2.8" 3 Megapixel CMOS
Bit rate	32 Kbps - 2 Mbps
Effective pixels	1984 (H) × 1488 (V)
Frame rate	1-25 fps
Lens	3.2 mm @ F2.0, 56°/104°/125°
Min. brightness	Colour: 0.1 lux @ F2.0, Black/white: 0.01 lux @ F2.0
Local and cloud storage	256 GB, 6 s (event)
WLAN frequencies	2,412 – 2,472 MHz (max. power <20 dBm)
WLAN security	128 bit WPA/WPA2/WPA3, WPA-PSK, WPA2-PSK, WPA3-PSK
Degree of protection	IP65
Supported memory cards	FAT32 file system-formatted micro SD/ micro SDHC memory card
Micro SD card slot up to max. (FAT32 format)	256 GB/s
Ambient temperature	-20 to +50°C
Dimensions (W × H × D)	57 × 41 × 145 mm
Weight	200 g g

Subject to modifications.

Free download of the Homematic IP app!



Bevollmächtigter des Herstellers:
Manufacturer's authorised representative:

eQ-3

eQ-3 AG
Maiburger Straße 29
26789 Leer / GERMANY
www.eQ-3.de