



Highlights

Homematic IP Novelties
2026

You can be sure of that.

The intelligent alarm system from Homematic IP

With Homematic IP, security becomes an integral part of everyday life – not complicated, but intelligently networked and intuitive to use. The new alarm system includes outdoor and indoor cameras, alarm sirens and sensors, access control as well as a video doorbell. At its heart is the Homematic IP app, where all information come together.



Homematic IP Cameras

Homematic IP cameras are more than just surveillance devices – they are an active component of the networked security system. Video and audio can be accessed at any time via the camera live feed in the Homematic IP app. This means you can see and hear what is happening in your own home, even when you are away.



- Security cameras for indoor and outdoor areas
- High-resolution video image directly in the app
- Integrated speaker and microphone
- Motion and person detection
- Local storage of video data on SD card
- Night vision
- Weatherproof outdoor cameras with a IP65 degree of protection
- Rechargeable outdoor camera with up to 6 months standby time

Indoor Camera – basic | HmIP-CI-B
Indoor Camera – plus | HmIP-CI-PL
Outdoor Camera | HmIP-CO
Outdoor Camera, anthracite | HmIP-CO-A
Outdoor Light Camera | HmIP-COL
Outdoor Light Camera, anthracite | HmIP-COL-A
Outdoor Camera, rechargeable | HmIP-COR



Homematic IP Video Doorbell

With the Homematic IP video doorbell, you always know who comes and goes in your home. Equipped with an integrated camera including intercom function, it has everything you need to reliably recognise visitors and communicate directly with them – even when you are not at home.



- High-resolution camera with night vision
- Intercom function
- Infrared motion detection
- Direct power supply via bell transformer or battery-powered operation with up to 6 months standby time
- IP65 degree of protection

Video Doorbell | HmIP-CODB
Video Doorbell, anthracite | HmIP-CODB-A



Homematic IP Door Lock Drive – pro

With the Homematic IP Door Lock Drive – pro, your front door becomes an intelligent part of your security concept. Integrated position and vibration sensors, reliable detection of the door status (open or closed) and effective tamper protection monitor the entire door mechanism. Any abnormalities are immediately detected and reported.

**NEW
in Q2**



- Comfortable opening, locking and unlocking via app, keypad or remote control
- Flexible installation on almost any door without replacing the lock cylinder
- Comprehensive door monitoring through integrated sensors and tamper protection
- Automatic activation or deactivation of a Homematic IP alarm system
- Long-lasting battery or rechargeable battery operation with 1.5 years of battery life in typical use
- Fully automatic calibration run and closure detection

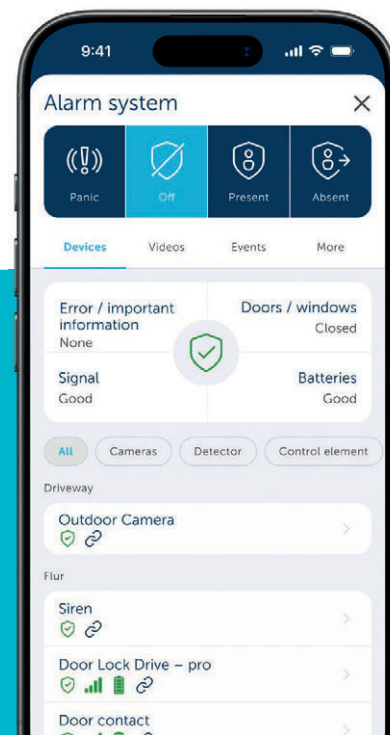
Door Lock Drive – pro | HmIP-DLP
Door Lock Drive – pro, anthracite | HmIP-DLP-A
Door Lock Drive – pro, white-silver | HmIP-DLP-WS
Door Lock Drive – pro, anthracite-silver | HmIP-DLP-AS



Alarm Dashboard Homematic IP App

The new alarm dashboard in the Homematic IP app provides you with all the information about your alarm system in one place: live camera feeds, an event log, alarm mode control, alarm and device settings, alarm notifications with direct emergency call option and more.

- Two alarm modes (present and absent)
- App panic button
- Push notifications for alerts
- Live video feeds and recordings
- Alarm event log
- Overview of the entire alarm system status



**NEW
in Q2**



Homematic IP Wired Glass Series

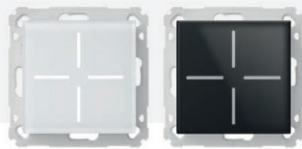
The elegant Homematic IP Glass Series will also be available as a wired solution from 2026. High-quality real glass surfaces meet smart design. The touch-sensitive surfaces enable intuitive control. Whether for lighting, room climate or as a stylish design element – the Homematic IP Glass Series combines technology and aesthetics for maximum living comfort.

Homematic IP Wired Glass Push-buttons

The elegant all-rounder: with one, two or four touch-sensitive control panels, the Homematic IP Wired Glass Push-button controls a wide range of functions in your Homematic IP smart home.

- One-, two- or four-button configuration
- Dimming function (long press)
- Quick action function
- Available in white and black
- Ideal for cabled Homematic IP Wired installations

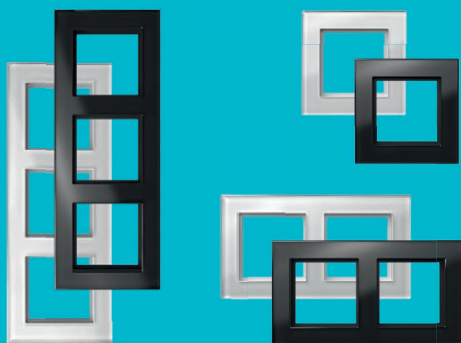
Glass Push-button | HmIPW-WGS-A
Glass Push-button, black | HmIPW-WGS-A



Wireless
and Wired!

Elegant glass frames in 55 mm format

The matching glass frames for your Homematic IP glass push-buttons and glass wall thermostats. Available in black and white as single, double or triple frames.



NEW
in Q3

Homematic IP Wired Glass Wall Thermostats

The Homematic IP Wired Glass Wall Thermostat is available in two versions, with or without an integrated CO2 sensor. The radio-controlled version was awarded with the renowned Red Dot award for its sophisticated design.

- Precise control of room temperature in 0.5°C increments
- Humidity sensor
- CO2 sensor (optional)
- Quick action function
- Automatic brightness control
- Available in white and black
- Ideal for cabled Homematic IP Wired installations

Glass Wall Thermostat | HmIPW-WGT
Glass Wall Thermostat, black | HmIPW-WGT-A
Glass Wall Thermostat with CO2 sensor | HmIPW-WGTC
Glass Wall Thermostat with CO2 sensor, black | HmIPW-WGTC-A





Homematic IP Glass Displays

With the multifunctional Homematic IP glass displays, you can control lighting, shading, room climate and more with just one control element. Up to 11 screen pages can be assigned functions according to your preferences. The elegant glass design blends perfectly into modern living or working environments.



- Central control of numerous smart home functions
- Triggering lighting scenes, automations and notifications
- Intuitive colour picker for configuring RGB, RGBW and tunable white lights
- Homematic IP Glass Display – plus with additional functions for room climate control
- Display of weather and environmental data
- Comfortable touch operation
- Automatic adjustment of screen brightness
- Also available as Homematic IP Wired devices

Glass Display | HmIP-WGD
Glass Display – plus | HmIP-WGD-PL

NEW
in Q2



Homematic IP Wall-mount Remote Control – 6-buttons, 230 V

Whether switching lights, operating blinds, activating the alarm system or triggering several functions at once – the 6-buttons wall-mount remote control makes operating your smart home more convenient than ever before.

- Six freely assignable buttons
- Six multicoloured, independent status LEDs
- Integrated 230 V switching output
- Additional extension input for conventional push-buttons and switches
- Compatible with all 55 mm switch series
- Available in white and anthracite

Wall-mount Remote Control – 6-buttons,
230 V | HmIP-WRC6-230

Wall-mount Remote Control – 6-buttons,
230 V, anthracite | HmIP-WRC6-230-A

Wireless
and Wired!



NEW
in Q1





Homematic IP Universal Dimming Insert

Easy retrofitting is made possible by the Homematic IP Universal Dimming Insert, which also supports operation without a neutral conductor. Thanks to four variable control elements, you can control the lighting in any building easily and smart.



- Automatic detection of connected load (max. 200 VA) and the appropriate dimming method
- Phase control and section dimming methods
- For all common light bulbs
- Extension input for connecting conventional push-buttons and switches
- 2–200 W in operation with a neutral conductor
- 20–200 W in operation without neutral conductor

Homematic IP Universal Dimming Insert | HmIP-UDI

Homematic IP Universal Dimming Control Element – push button | HmIP-UDI-PB2

Homematic IP Universal Dimming Control Element – push button, anthracite | HmIP-UDI-PB2-A

Homematic IP Universal Dimming Control Element – motion detector | HmIP-UDI-SMI55

Homematic IP Universal Dimming Control Element – motion detector, anthracite | HmIP-UDI-SMI55-A

**NEW
in Q3**



Homematic IP Switch actuators (6 A) – flush-mount

Clever and compact: the new Homematic IP switch actuators are specially designed to be installed even in tight installation situations. Comfortable spring-loaded plug-in terminals on the front make wiring easier.

- Smart switching of all common household appliances
- Extremely compact design
- Up to 6 A switching capability
- Optionally available with additional terminal for switches or push-buttons and Push-to-Pair function



Switch actuator (6 A) – flush-mount | HmIP-FS6

Switch actuator with push-button input (6 A) – flush-mount | HmIP-FS16





Homematic IP Water Stop and Supply Unit

Three devices, one product: water stop, pressure reducer and water filter with backwash function. Thanks to simple app control, the main shut-off valve can be opened and closed remotely at any time.

- Water stop, pressure reducer and innovative backwash filter in one
- App notification when the backwash interval is reached
- Easy closing of the main shut-off valve via app, push-button or automation
- Combination with Homematic IP water sensors for reliable protection against water damage
- Easy installation replacing existing water filters or pressure reducers
- Emergency power supply via integrated rechargeable batteries
- Connection to Grünbeck products (e.g. water softener) possible via SoftLiQ interface

**NEW
in Q1**



Water Stop and Supply Unit | HmIP-WSS



Homematic IP Wall Thermostat with Humidity Sensor

Good things just got better. The new version of the Homematic IP wall thermostat with humidity sensor (HmIP-WTH-3) now also supports Push-to-Pair connections with Homematic IP radiator thermostats.



- Measures temperature and humidity
- Rotary wheel for quick temperature control
- Practical LC display
- Push-to-Pair with Homematic IP radiator thermostats, floor heating controllers and pluggable switches

**NEW
in Q3**



Wall Thermostat with Humidity Sensor | HmIP-WTH-3

Wall Thermostat with Humidity Sensor, anthracite | HmIP-WTH-3-A



Modbus and MQTT Plugins Homematic IP Home Control Unit

The Homematic IP Home Control Unit is becoming even more flexible. In addition to EEBUS, the smart home control centre will also support Modbus and MQTT in future. The new communication interfaces, which are integrated via plugins, offer installers and system integrators even more scope for individual building automation.

- Easy integration of heat pumps, inverters, wall boxes, air conditioning units and many other components via Modbus
- Expanded options for using the Home Control Unit as a HEMS centre
- Transmission of control commands and sensor data between Homematic IP and external systems thanks to MQTT
- Secure and easy integration as plugin

**NEW
in Q3**





Homatic IP light bulbs for E27 and GU10 sockets

The easiest way to smart lighting: Homematic IP light bulbs are simply inserted into existing lamps and lights. Functions such as colour scenes, Dim-to-Warm and dynamic daylight make lighting a highlight in any building.

**NEW
in Q3**



- RGB colours and Tunable White for a wide range of lighting and colour scenarios
- Dim-to-Warm and dynamic daylight
- Control in lighting groups
- Easy retrofitting in just a few minutes

Bulb – RGBWW, E27, double pack | HmIP-E27
Bulb – RGBWW, GU10, double pack | HmIP-GU10



170348

Subject to changes, printing errors and mistakes. Status: March 2026